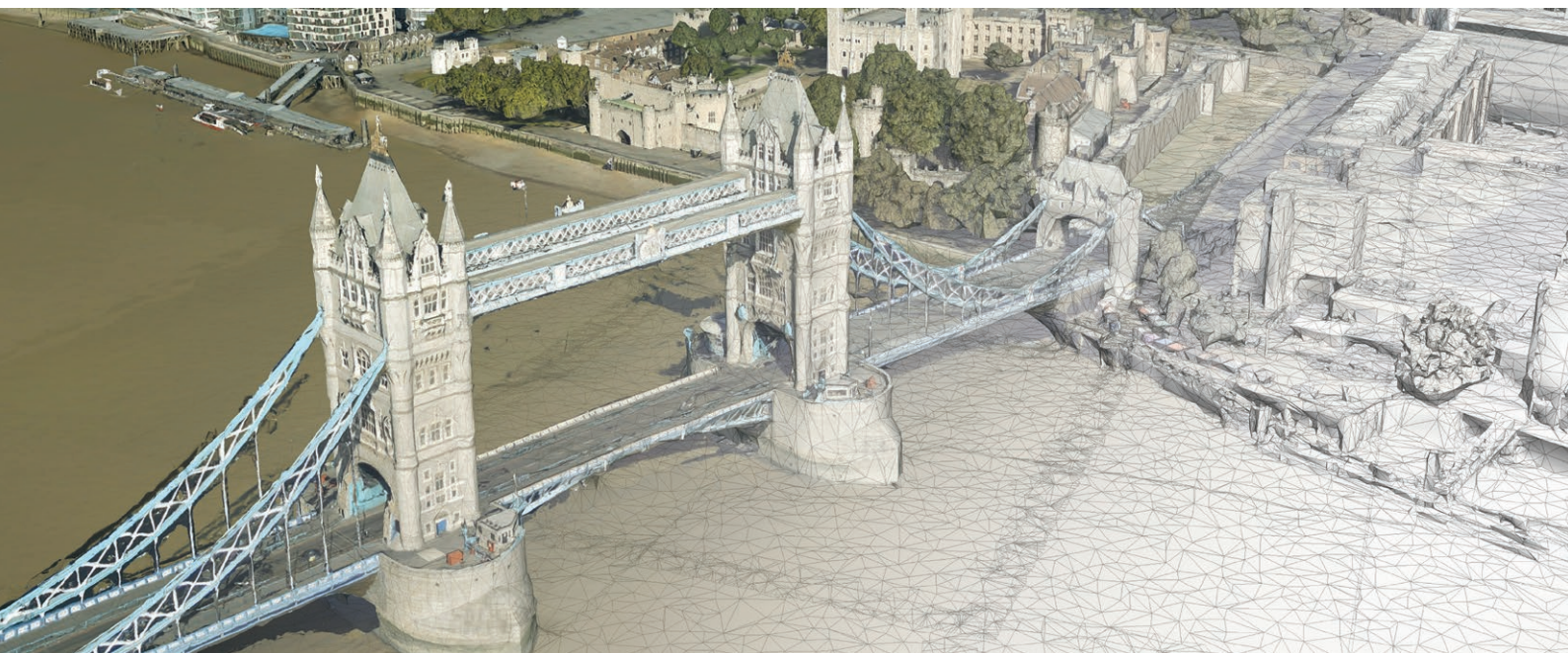


# DATA SHEET

Product: **MetroVista™**

Region: **Great Britain**



**B**luesky is a leading supplier of aerial survey, GIS and location-based data and services. Operating globally, Bluesky has offices in the UK, US, Ireland and India.

Specialising in aerial photography and LiDAR, Bluesky uses the latest technology and an experienced technical team to produce both off-the-shelf and tailored products across a range of market sectors.

We capture vertical and oblique photography as well as LiDAR and thermal, and are experts in the creation of seamless true ortho photos, digital terrain models, digital surface models and 3D models.

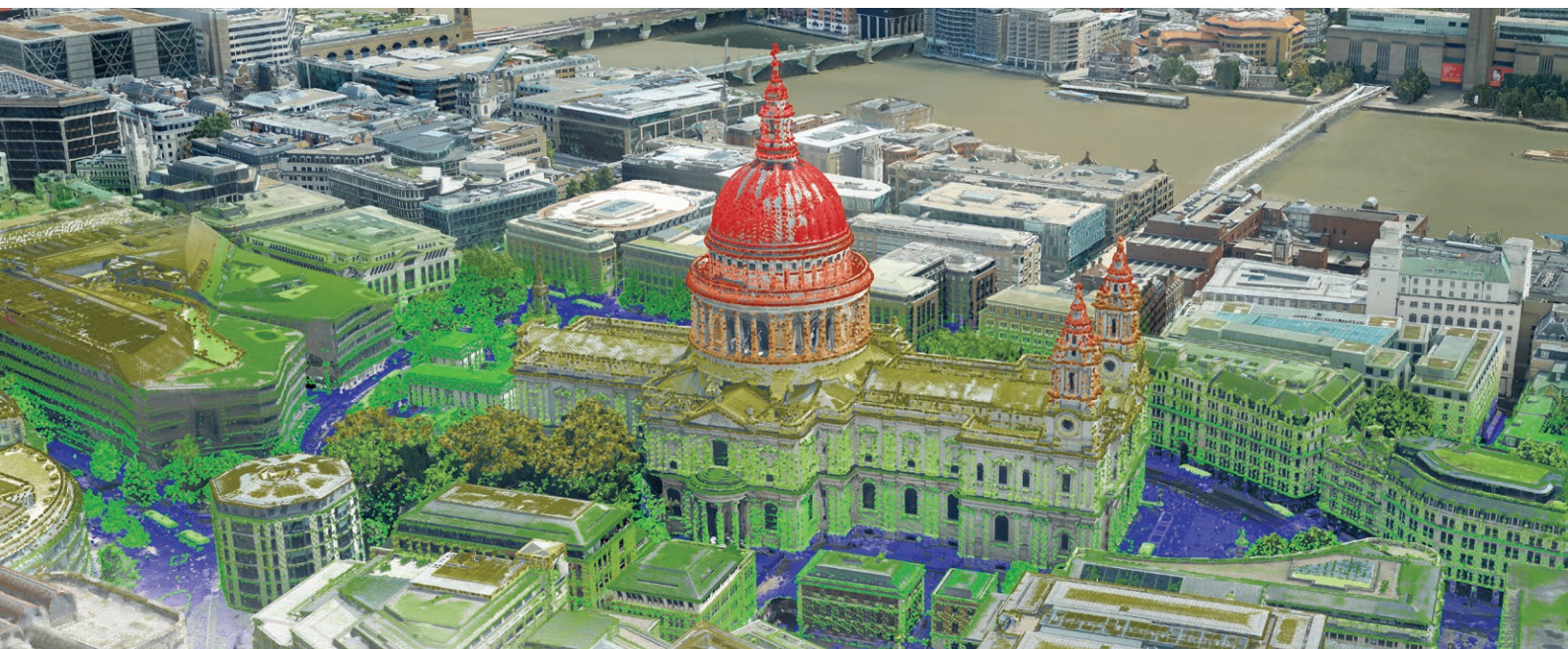
## Key Features

- Captured using cutting edge sensor technology
- 3D interactive mesh models
- LiDAR, vertical and oblique photography available separately or as fully rendered mesh models
- Compatible with GIS, CAD and web mapping software
- Available as part of our flexible subscription service for quick and cost effective access
- An enabler of the Smart City vision

## Applications & Industries

- Smart City and Digital Twin city modelling and analysis
- Visualisation and simulation
- Insurance and risk assessment
- Energy and utilities
- Civil engineering
- Telecoms
- Property and land development
- Urban planning and architects
- Estate agents
- Education
- Environmental impact

Specification	Aerial Photography	Obliques	LiDAR	Mesh Models
<b>Resolution</b>	5cm	5cm	16 - 100 PPM	Derived from 5cm
<b>Coverage</b>	Selected cities across Great Britain			
<b>Accuracy XY</b>	± 10cm rmse	± 10cm rmse	± 15cm rmse	± 25cm rmse
<b>Accuracy Z</b>	-	-	± 10cm rmse	± 25cm rmse
<b>Formats</b>	Include: JPG, TIFF, ECW, SID, KMZ	Include: JPG, TIFF, ECW, SID, KMZ	Include: ASCII Grid, ASCII XYZ, DXF Point, GeoTiff, LAS	Include: OBJ, FBX, I3s, 3DML, SLPK, Cesium
<b>Standard Projection</b>	British National Grid			



At the time of publication all of the specifications were correct but are subject to change.

© Bluesky International Ltd.