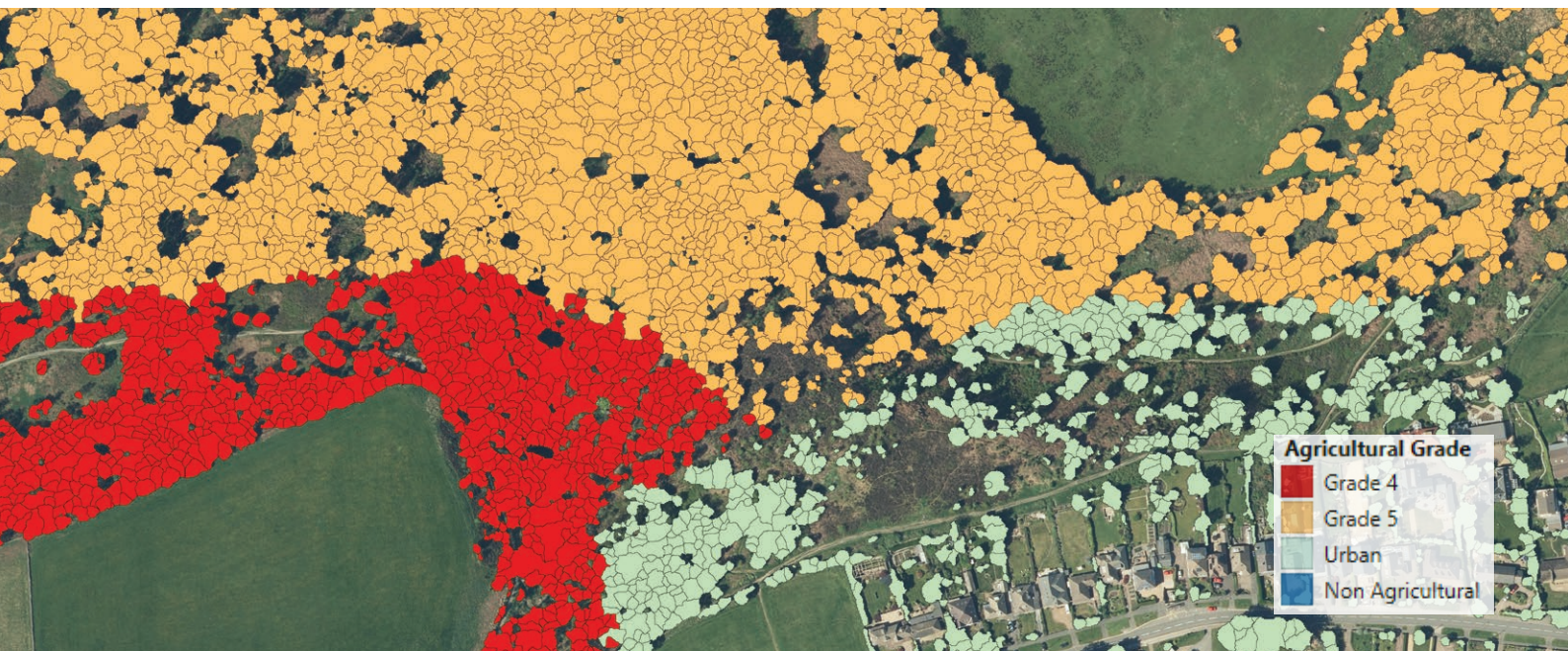


# DATA SHEET

Product: **National Tree Map Plus™ (NTM+™)**

Region: **Great Britain**



Bluesky, a Woolpert Company is a market leader in the capture, production, exploitation, and delivery of geospatial datasets and services that have rapidly become critical tools in tackling the challenges of the modern world. Operating globally, Bluesky has offices in the UK, US, Ireland and India.

As a recognised specialist in the acquisition and processing of aerial photography and LiDAR, Bluesky uses the latest technology and an experienced technical team to produce innovative off-the-shelf and tailored products to meet the needs of organisations in a range of market sectors.

Building on the success of the pioneering National Tree Map™ (NTM™), Bluesky now offers NTM+™, delivering richer and more contextual tree intelligence than ever before. With regular updates alongside the two-year cyclic aerial imagery capture programme, NTM+™ is the most up-to-date source of tree attribute information available.

## Key Features

### NTM+™ - Contextual Intelligence for Every Tree

NTM+™ reveals not just where each tree is, but what surrounds it. Each mapped tree is now linked to detailed contextual data, including:

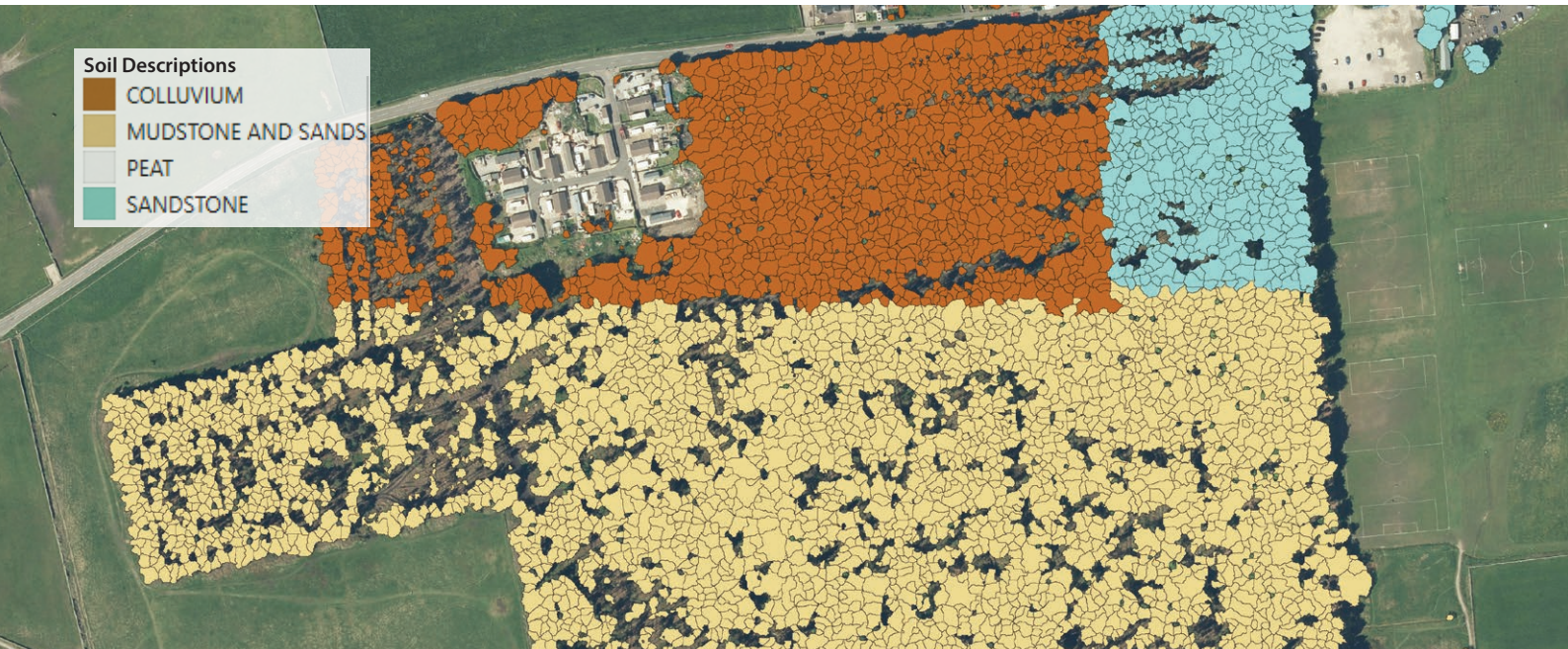
- **Location:** nearest UPRN, postcode, LSOA, district, and county
- **Conservation:** SSSI, AONB, SAC, National Park, or Greenbelt designations
- **Land Use:** residential, industrial, agricultural, and more
- **Soils & Agriculture:** soil type, drainage, and ALC grade



Applications & Industries

- Tree management (including tree preservation orders)
  - Biodiversity Net Gain
  - Flood and pollution monitoring
  - Transport infrastructure, e.g. railway lines
  - Utility and energy infrastructure
- Town and city planning
  - Forestry
  - Ecology
  - Air quality monitoring
  - Land and estate management

Specification	
Layers	1. Vegetation Polygons (Vector Polygon) - Representing the vegetation extent of each feature 2. Centrelines (Vector Line) - Length of each feature represented as a central line 3. National Tree Map™ - All 3 layers of NTM™ are included
Coverage	England, Wales & Scotland
Accuracy Z	± 1 m rmse
Classification Criteria	Vegetation between 0.5 - 2.99m in height (NTM™ - Trees over 3m in height)
Formats	Include: ESRI Shape, MapInfo Tab, Geodatabase, Geopackage, DWG, KMZ
Standard Projection	British National Grid



At the time of publication all of the specifications were correct but are subject to change.