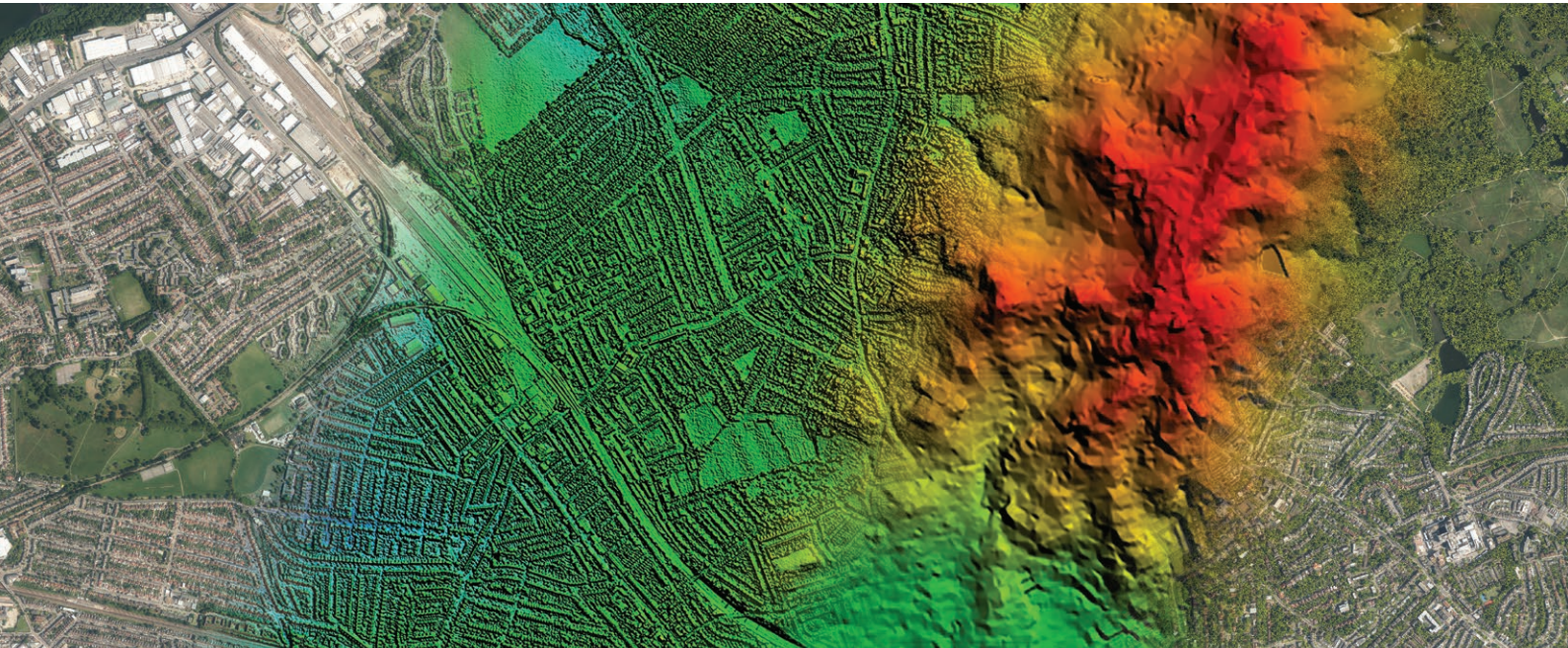


Data without limits



What is GeoStream?

GeoStream from Bluesky is a new service that enables our customers to access the data they need, when they need it, without limits. A wide range of our products are available now and because we host it, you don't need to worry about storing large amounts of data, having to purchase updates or having specialist viewing software. Simply access what you want when you want it, it is as simple as that.

How it works?

GeoStream is a cost effective subscription service that makes it easy for you to access national aerial photography, height data and tree mapping across Great Britain and the Republic of Ireland together with ultra-high resolution city imagery, both vertical and oblique.

One monthly payment negates the need for multiple payments at point of sale making it quicker and easier to access our high quality products.

There are different package options to suit your needs including multi-users or corporate licences, with discounts for accessing multiple products.

GeoStream is available now so speak to us today to find out more.

Enjoy a 7-day free trial

Get in touch today and we will set you and your team up with access to GeoStream for 7 days on us so you can see for yourself how easy it is to access our data.

“
At RCI, we provide support to a range of clients including Chartered Building Surveyors and Chartered Fire Engineers and we use GeoStream daily. It's one of many research tools we utilise when carrying out building surveys.

GeoStream gives us access to high-quality data at an instant and the hi-resolution aerial and oblique photography are used to assist us from day one of our projects as part of our familiarisation information on buildings at the start of PAS9980 process.

RCI cover the entirety of the UK and utilise GeoStream in combination with our in-house survey records, which spans years and include survey data that has been provided to us by a number of our clients such as Brooker Diamon Chartered Fire Engineers.

Together this gives us an extraordinary and unique data set which greatly benefits our clients.”

Tom Diamond BSc, AIFSM
Lead Technician at RCI Technical Svices Ltd

The Benefits of GeoStream versus Google Earth

Functionality or service	GeoStream	Google Earth
Provenance of data Source (consistent source) Date of acquisition (detailed metadata) Camera technology used for capture Calibration certificates available	All data is owned and controlled by Bluesky Full standardised metadata available, Gemini 2 compliant Aerial photography has been acquired by large format metric cameras and processed using industry leading software Calibration certificates available on request	Imagery collected over time from a broad range of suppliers & platforms (source Google Earth Help doc) Can have little or no date information by data provider so will only show a date range (source Google Earth help doc) No calibration certificates
Consistency Resolution (higher resolution in many areas) Accuracy (spatially accurate to within at least 50cm) Radiometry	A base resolution of 12.5cm with many areas at 5cm Spatially accurate, +/- 50cm RMSE minimum Sympathetically colour balanced for a seamless product for data acquired in the same year	Imagery resolution ranges from 15 meters to 15 centimetres (source Wikipedia)
Local projection systems which negate distortions and inaccuracies caused by global systems	GB or Irish projection systems for ease of data integration and accurate location	Global projection system can cause distortions and inaccuracies
Guaranteed updates	Geostream products updated on a three-year rolling programme with some urban areas more frequently	Fairly regularly updated but no documented commitment to update
Access to other products	GeoStream gives you access to a wide range of geospatial data products from Bluesky, including: <ul style="list-style-type: none"> • Oblique aerial photography • Terrain data (DSM & DTM) • National Tree Map • Ordnance Survey Mapping 	Availability of other products is patchy
Additional functionality	GeoStream Viewer - An always expanding range of analysis tools that help users derive maximum benefit	Limited functionality
Service Level Agreement	SLA with guaranteed up time	No SLA
Customer support	Dedicated account manager on-hand to support during business hours	No dedicated customer support

GeoStream has two options available.

Geostream Viewer (for everyone)
From just £100 per month / £150 with NTM included
Unlimited national data access hosted by Bluesky
One user licence AP £100/month - AP & NTM £150/month Corporate licence AP £200/month or AP & NTM £300/month
Web Based service with no specialist GIS software required

GeoStream Direct (for users requiring data served into their own application)
Tailored package for GIS professionals
Streamed direct into your GIS software
Unlimited data access (subject to a fair use policy)
Price on application (a range of commercial models available)

Products available in GeoStream



Aerial Photography



National Tree Map™



DSM / DTM Height Data



MetroVista™ Obliques

Get in touch today at info@woolpert.com

At the time of publication all of the information was correct but could be subject to change.

© Bluesky International Ltd.